

Koalas Daily Routine

Koalas Daily Routine

7:00am – Centre opens, and breakfast is served

8:00am – Transition to Koalas room

8:10am – Nappy change

9:00am – Morning Tea (Indoor/outdoor) *

9:30am – Outdoor play/activities *

10:00am – Group time

10:30am – Nappy Change

10:45am – Bed set up

11:00am – Lunch is served

11:30am – Rest/sleep time

2:00pm – Pack away beds/Nappy change

2:15pm – Afternoon tea (Indoor/outdoor) *

2:45pm – Outdoor play/activities *

3:15pm – Group activities

4:00pm – Sandwiches

4:30pm – Indoor play/activities

5:00pm – Combined family grouping

6:00pm – Centre close





Possums Daily Routine

7:00am – Centre opens, and breakfast is served

8:00am – Nappy change

8:10am – Combined family grouping (Possums Room)*

9:00am – Morning Tea (Indoor/outdoor) *

9:30am – Outdoor play/activities *

10:00am – Group time

10:30am – Nappy Change

10:45am – Bed set up

11:30am – Lunch is served

12:00pm – Rest/sleep time

1:30pm – Pack away bed/Nappy change/Toilet

2:00pm – Afternoon tea

2:30pm – Outdoor play/activities *

3:00pm – Group time

3:30pm – Indoor play/activities

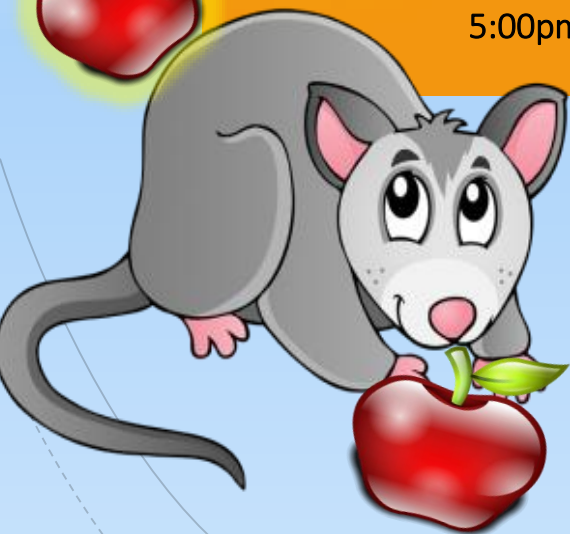
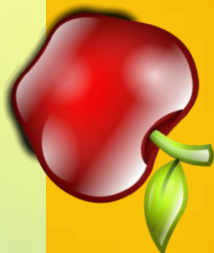
4:00pm – Nappy change

4:15pm – Sandwiches

4:45pm – Reading time

5:00pm – Combined family grouping

6:00pm – Centre close





Kangaroo Daily Routine

- 7:00am – Centre open, breakfast is served
- 8:00am – Combined family grouping (Possums Room)*
- 9:00am – Morning tea
- 9:30am – Group time
- 10:00am – Outdoor play/activities*
- 10:45am – Bed set up
- 11:00am – Lunch is served
- 11:30am – Toilet
- 11:45am – Rest/sleep time
- 1:45pm – Pack away beds/toilet
- 2:00pm – Afternoon tea
- 3:00pm – Outdoor play*
- 4:00pm – Indoor play/activities
- 4:30pm – Sandwiches
- 5:00pm – Combined family grouping
- 6:00pm – Centre close





Preschool Daily Routine

7:00am – Centre open, breakfast is served

8:00am – Combined family grouping*

9:00am – Morning Tea

9:30am – Morning circle

10:00am – School Readiness

11:00am – Outdoor play/activities*

11:30am – Bed set up

11:40am – Lunch is served

12:00pm – Sleep/rest time

2:00pm – Pack away beds/toilet

2:30pm – Afternoon tea

3:00pm – Indoor play/activities

4:00pm – Outdoor play/activities*

4:30pm – Sandwiches

5:00pm – Combined family grouping

6:00pm – Centre close

